



**JCOPLASTIC** SpA  
Industria Contenitori Plastici

## 240 L 2-WHEELED BIN IN HDPE

COMPLYING WITH EN 840-1-5-6  
COMPLYING WITH RAL-GZ 951/1/06.13



Our range of two wheeled bins are suitable for all DIN standard lifting equipment (EN 1501-1). Their geometrical shape allows straightforward and complete emptying/cleaning of the container due to their internal smooth wall design.

- Body and lids are of one piece single moulded design manufactured in High Density Polyethylene (HDPE).
- The material used is of a high quality, UV stabilised, resistant to decay, frost, heat, water, and most chemicals.
- Colour choices are free from heavy metals (Cadmium and Lead) and toxic substances in line with current legislation.
- The two wheels (Ø 200 mm) are easy to replace and fixed by a high quality steel zinc plated axle capable of withstanding severe impact.
- Moulded rear handles allow ease and stability of movement.
- The lid is hinged with two handles for ease of opening.
- When closed the lid and lip seal prevent rain water from entering the container.
- All containers are compatible with identification/weighing systems and have an RFID chip nest aperture moulded under the front lip.
- Different locks available on request.
- Containers can be personalised with Logo's, embossed marking and serial numbering.
- We have options available for recycling (lids, apertures, cowls).

GS mark (issued by TUV Rheinland LGA Products, Germany) showing safety, EN 840 and RAL compliance testing.

**50**

19632013

**Sede Legale  
Legal Seat**  
Piazza della Repubblica, 30  
20121 Milano, Italia  
Cap.Soc. € 37.188.000 i.v.  
Registro Imprese  
Milano 03350060657  
Partita Iva 12549920150

**Sede Amministrativa e Stabilimenti  
Operations Headquarters and Factories**  
Viale Spagna, Zona Industriale  
84091 Battipaglia (SA) Italia  
+39 0828 392111 pbx  
+39 0828 392164 fax  
mail@jcoplastic.com  
www.jcoplastic.com

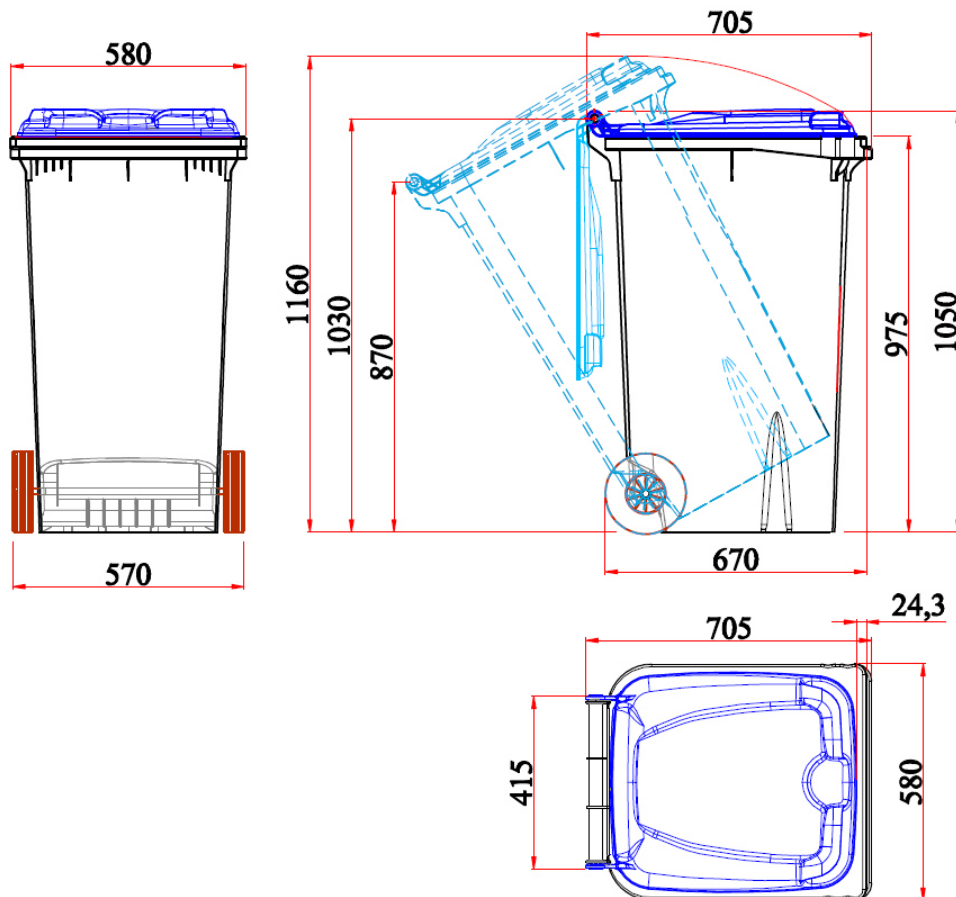




## TECHNICAL DATA

240 LITERS	
NOMINAL CAPACITY (Lt.)	240
Max. LENGHT (mm.)	705
Max. BREADTH (mm.)	580
Max. HEIGHT (mm.)	1050
WHEELBASE (mm.)	570
WEIGHT (Kg.)	11,00*
MAX. LOAD (Kg.)	96,00

\*According to the European standard EN 840-5 the tolerances on the plastic container mass claimed is +/- 5%



Jcoplastic reserves the right to alter the data of the described models due to technical or commercial modifications and improvements at any time without giving notice.

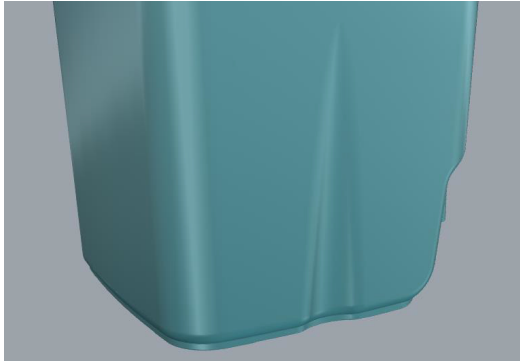
**50**

19632013

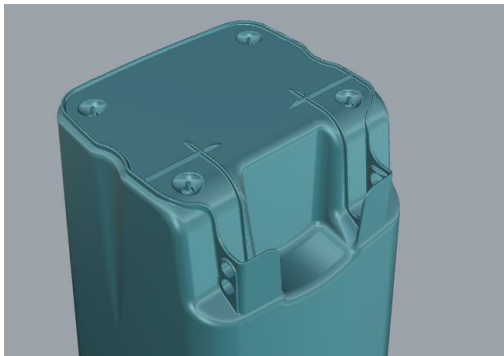
**Sede Legale  
Legal Seat**  
Piazza della Repubblica, 30  
20121 Milano, Italia  
Cap.Soc. € 37.188.000 i.v.  
Registro Imprese  
Milano 03350060657  
Partita Iva 12549920150

**Sede Amministrativa e Stabilimenti  
Operations Headquarters and Factories**  
Viale Spagna, Zona Industriale  
84091 Battipaglia (SA) Italia  
+39 0828 392111 pbx  
+39 0828 392164 fax  
mail@jcoplastic.com  
www.jcoplastic.com





**TWO SIDE ELASTIC AREAS  
ABSORBING THE STRESS CAUSED  
BY THE COMPACTOR TRUCK**



**THE NEW BOTTOM  
GIVES MORE RESISTANCE TO THE  
BIN**



**RFID CHIP NEST APERTURE  
MOULDED UNDER THE FRONT LIP  
OF EACH BIN**



**NEW LID  
DESIGNED FOR NOISE REDUCTION**

**50**

19632013

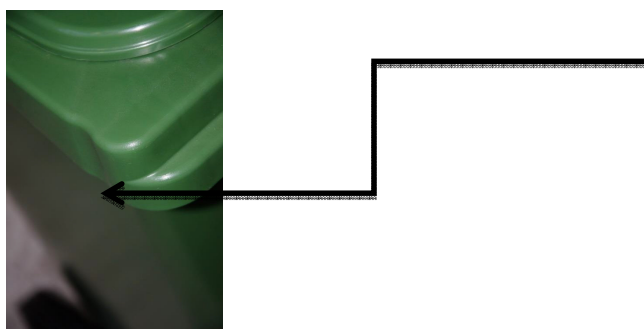
**Sede Legale  
Legal Seat**  
Piazza della Repubblica, 30  
20121 Milano, Italia  
Cap.Soc. € 37.188.000 i.v.  
Registro Imprese  
Milano 03350060657  
Partita Iva 12549920150

**Sede Amministrativa e Stabilimenti  
Operations Headquarters and Factories**  
Viale Spagna, Zona Industriale  
84091 Battipaglia (SA) Italia  
+39 0828 392111 pbx  
+39 0828 392164 fax  
mail@jcoplastic.com  
www.jcoplastic.com





ALVEOLAR STRUCTURE OF THE **REINFORCED COMB LIFTING DEVICE** WITH THE NEW ELASTIC ELEMENT HIGHLIGHTED IN RED (PATENT N° EP 1702867 A1).



**NEW PATENT PENDING**  
(SIDE ELASTIC ELEMENT FOR ABSORBING THE STRESS DURING EMPTYING PROCESS)



**PRODUCT ERGONOMICS**  
THE FOOT APERTURE ON THE AXLE FACILITATES THE MOVEMENT OF THE BIN FULLY LOADED AND REDUCES THE EFFORTS OF THE OPERATORS



OUR BIN HAS **GS MARK** (GESPRÜFTE SICHERHEIT) ISSUED BY TUV RHEINLAND (GERMANY) ISSUING THE CERTIFICATE ACCORDING TO **EN 840** AND RELATED TESTS COMPLYING TO **RAL GZ 951/1**.





## SELECTIVE COLLECTION

**Paper slot available size:**  
**mm 300 x 80**  
**mm 300 x 120**