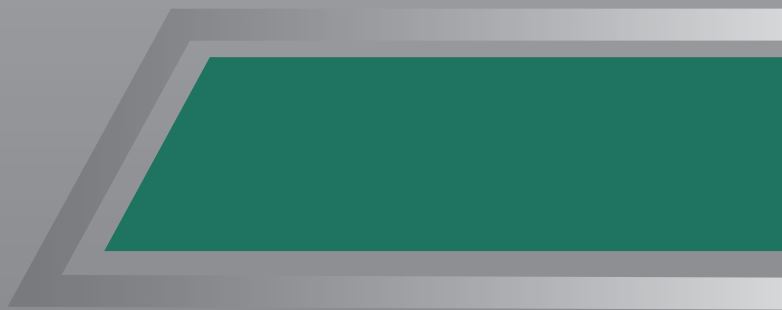
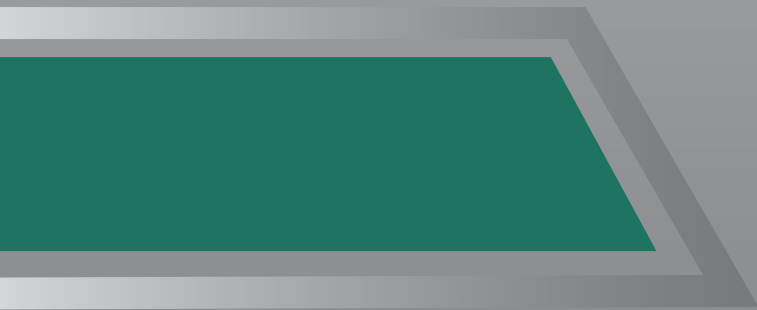
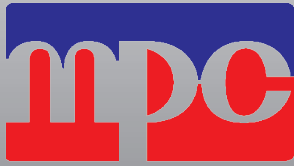


Toastmaster®





**Middleby
Philippines
Corporation**

113 Technology Ave., Technopark, Biñan, Laguna Philippines 4024
Tel. Nos. : (02) 520-8170 to 79 | Fax Nos. : (02) 520-8191 | (049) 541-1361

COMPANY PROFILE

Middleby Philippines Corporation (MPC) is one of the subsidiaries of The Middleby Corporation (TMC) based in Elgin, Illinois, USA and has been a leading manufacturer of commercial food service equipment.

The MPC Plant is in Biñan, Laguna, Philippines strategically located 47 km from the international airport and 50 km from the international seaport.

MPC is in a duty free special economic zone to produce stainless steel custom fabricated kitchen equipment and Toastmaster products.

Locally, MPC supplies to almost all local and international hotel and restaurant chains through Middleby Worldwide Philippines. Internationally, MPC exports kitchen equipment through distributors around the world.

The facility consists of 5,000 square meters with a manufacturing plant, a 1,300 square meter office, showroom, test kitchen and demonstration center.



TOASTMASTER CATALOG





ABOUT TOASTMASTER

Toastmaster has been a venerable brand in the foodservice industry. Generations of users have come to trust this brand as it delivered solid solutions to their kitchen needs.

As we design, build and service Toastmaster equipment, we are driven to sustain and augment the high standards of performance and quality you've come to expect from Toastmaster.

The new Toastmaster is beyond toasting. We take pride in building the best pop up toasters, but we don't stop there. Toastmaster now offers solutions in grilling, cooking, baking, frying, steaming and holding in addition to toasting. We urge you to take the time to acquaint yourself with our solutions.







COUNTERTOP GAS CHARBROILER - RADIANT

TMDC - 24



STANDARD FEATURES (RADIANT):

- Front including top rail is all stainless steel
- Rear and sides are aluminized steel
- HI/OFF gas valve with one standing pilot for each burner
- 3/4" rear gas connection
- Rests on 4" adjustable steel legs
- Wide or narrow branding by inverting grates (1/4" or 1/8")
- Equipped with grease pan and stainless steel radiant plates

MODEL	LENGTH	WIDTH	HEIGHT	BTU/Hr.	SHIP WEIGHT (Kilos)
TMDC-24	611(24)	648(25.5)	365(14.3)	60,000	70
TMDC-36	914(36)	648(25.5)	365(14.3)	90,000	97
TMDC-48	1219(48)	648(25.5)	365(14.3)	120,000	159

COUNTERTOP GAS CHARBROILER - LAVA ROCK

TMDCL - 24



STANDARD FEATURES (LAVA ROCK):

- Stainless steel front and top rail. Rear and sides are aluminized steel.
- Hi-off valve with one standing pilot for each burner
- Dual branding grates
- 3/4" gas connection
- Rests on 4" adjustable steel legs
- Equipped with grease pan, lava rock grid and lava rocks

MODEL	LENGTH	WIDTH	HEIGHT	BTU/Hr.	SHIP WEIGHT (Kilos)
TMDCL-24	609(24)	699(27.51)	400(15.7)	60,000	70
TMDCL-36	914(36)	699(27.51)	400(15.7)	90,000	97
TMDCL-48	1219(48)	699(27.51)	400(15.7)	120,000	159

COUNTERTOP ELECTRIC CHARBROILER

STANDARD FEATURES :

- Stainless steel front, top and sides, with aluminized steel rear and bottom enclosure
- Mechanical thermostat and pilot light with stainless steel guard on control panel
- Removable cast iron grids with grease pan
- Wrapped around a 2-1/2 inch-high splash guard
- Wirings are to be connected at the terminal block
- Rests on 4" high adjustable stainless steel legs

TECC - 4224



MODEL	LENGTH	WIDTH	HEIGHT	KW	SHIP WEIGHT (Kilos)
TECC-4224	609(24)	635(25)	366(14.4)	8.20	41
TECC-4236	914(36)	635(25)	366(14.4)	13.50	83

CERAMIC TANDOOR

STANDARD FEATURES :

- Stainless steel front and side covers
- Ceramic oven liner
- Rests on 4" caster wheels, two (2) with brakes
- Equipped with safety valve, pilot valve, HI/OFF valve, piezo igniter and glass thermometer
- Stainless steel oven cover with high temp plastic handle
- 3/4" rear gas connection
- Includes skewers and briquettes
- Optional with or without food pan

TCT - 1627



MODEL	LENGTH	WIDTH	HEIGHT	BTU/Hr.	SHIP WEIGHT (Kilos)
TCT-1627	762(30)	871(34.2)	989(38.92)	32,000LP / 31,000NAT	196

SHISH KEBAB

TSKC- 24



STANDARD FEATURES :

- Stainless steel front and rear panels
- Inner panels are aluminized steel
- Adjustable bullet feet
- HI/OFF gas valve and safety pilot valve
- Burners and pilot light turn on easily
- Cast iron radiant
- Provided with stainless steel drip pan
- 3/4" rear gas connection
- Rests on 4" adjustable steel legs



MODEL	LENGTH	WIDTH	HEIGHT	BTU/Hr.	SHIP WEIGHT (Kilos)
TSKC-24	609(24)	645(25.39)	426(16.77)	80,000	64
TSKC-36	914(36)	645(25.39)	426(16.77)	140,000	113
TSKC-48	1220(48)	645(25.39)	426(16.77)	180,000	147
TSKC-60	1524(60)	645(25.39)	426(16.77)	220,000	153



OIL FILTERING MACHINE

TMFS - 45



STANDARD FEATURES:

- All stainless steel lo-profile construction
- ON/OFF switch and quick disconnect hose fittings
- Stainless steel filter framing, stainless filter grate and strainer
- Equipped with a 5-foot flush hose assembly
- Rests on 2" castor wheels, two (2) with brakes
- Includes 10 pieces filter media

MODEL	LENGTH	WIDTH	HEIGHT	KW	SHIP WEIGHT (Kilos)
TMFS-45	468(18.4)	728(28.6)	543(21.3)	0.4	44
TMFS-65	510(20.0)	808(31.8)	604(23.7)	0.4	51



COUNTERTOP ELECTRIC FOOD WARMER

TECFW- 1529



STANDARD FEATURES :

- Exterior case is welded and reinforced stainless steel at front, sides and top with aluminized back and bottom
- ON/OFF switch, hi-temperature thermostat and audible buzzer.
- Heating is accomplished by pre-formed tubular heating element clamped to the underside of the heat well
- Rests on adjustable steel legs
- Includes : 3 pcs, 1/6 size x 4-inch deep food pan with cover and scooper (TECF1529);
2 pcs, 1/6 size x 4-inch deep food pan with cover and scooper (TECF1514)

MODEL	LENGTH	WIDTH	HEIGHT	KW	SHIP WEIGHT (Kilos)
TECFW-1514	357(14)	168(6.6)	178(7)	0.4	5
TECFW-1529	530(20.8)	206(8.1)	205(8)	0.4	7

COUNTERTOP ELECTRIC FOOD WARMER

TECFW - 1527



STANDARD FEATURES :

- Exterior case is welded and reinforced stainless steel at front, sides and top, with aluminized steel at rear and bottom enclosure
- Mechanical thermostat, hi-limit operating thermostat infinite control and pilot light
- Heating is accomplished by pre-formed strap heating element wrapped around the heat well
- Rests on 1-1/4" adjustable steel legs
- Includes one (1) 10-qt inset bowl with cover

MODEL	LENGTH	WIDTH	HEIGHT	KW	SHIP WEIGHT (Kilos)
TECFW-1527	330(12.9)	349(13.7)	270(10.6)	1.65	9



ELECTRIC FLOOR FRYER

TEFF - 14-2-C



STANDARD FEATURES (TEFF-14-ECO) :

- Stainless steel tank, front door, side panels, back splash, aluminized back and bottom
- Swing away immersion-type, sealed construction heating elements for easy cleaning
- Safety interlock switch, de-energizes elements when they are raised
- Virtually self-cleaning as residual heat burns off any carbon deposits when elements are raised
- Mechanical thermostat: 200°F-400°F (93°C-204°C)
- High temperature safety limit switch
- Includes two (2) twin nickel-plated wire mesh baskets with plastic-coated heat-resistant handles, drain extension pipe and removable basket hanger
- Standard 4-inch caster for easy service and cleaning
- Power cord not included

MODEL	LENGTH	WIDTH	HEIGHT	KW	SHIP WEIGHT (Kilos)
TEFF-14-ECO	394(15.5)	736(28.9)	1051(41.3)	11.00	74

STANDARD FEATURES (TEFF-14-G05/TEFF -14-2-G05/TEFF-18-G05: G05 CONTROL):

- Stainless steel tank, front door, side panels, back splash, aluminized back and bottom
- Swing away immersion-type, sealed construction heating elements for easy cleaning
- Safety interlock switch, de-energizes elements when they are raised.
- Virtually self-cleaning as residual heat burns off any carbon deposits when elements are raised
- Solid state thermostat
- High temperature safety limit switch
- Includes two (2) twin nickel-plated wire mesh baskets with plastic-coated heat-resistant handles, drain extension pipe and removable basket hanger
- Standard 4-inch caster for easy service and cleaning
- Power cord not included



MODEL	LENGTH	WIDTH	HEIGHT	KW	SHIP WEIGHT (Kilos)
TEFF-14-G05	394(15.5)	862.41(34)	1051(41.3)	16.50	74
TEFF-14-2G05	394(15.5)	862.41(34)	1051(41.3)	14.00	74
TEFF-18-G05	522(20.5)	862.41(34)	1051(41.3)	16.50	89

STANDARD FEATURES (TEFF-14 DS/TEFF-14-2-DS/TEFF-18-2-DS : DIGITAL CONTROL):

- Stainless steel tank, front door, side panels, back splash, aluminized back and bottom
- Swing away immersion-type, sealed construction heating elements for easy cleaning
- Safety interlock switch, de-energizes elements when they are raised
- Virtually self-cleaning as residual heat burns off any carbon deposits when elements are raised
- Digital controller with two (2) product timers and melt cycle. Visual and audible alarms.
- High temperature safety limit switch
- Includes two (2) twin nickel-plated wire mesh baskets with plastic-coated heat-resistant handles, drain extension pipe and removable basket hanger
- Standard 4-inch caster for easy service and cleaning
- Power cord not included

MODEL	LENGTH	WIDTH	HEIGHT	KW	SHIP WEIGHT (Kilos)
TEFF-14-DS	394(15.5)	862.41(34)	1051(41.3)	16.50	74
TEFF-14-2-DS	394(15.5)	862.41(34)	1051(41.3)	14.00	74
TEFF-18-DS	522(20.5)	862.41(34)	1051(41.3)	16.50	89

STANDARD FEATURES (TEFF-14 C/TEFF -14-2-C / TEFF -18 C : COMPUTERIZED CONTROL):

- Stainless steel tank, front door, side panels, back splash, aluminized back and bottom
- Swing away immersion-type, sealed construction heating elements for easy cleaning
- Safety interlock switch, de-energizes elements when they are raised
- Virtually self-cleaning as residual heat burns off any carbon deposits when elements are raised
- Computer controller with 18 product timer, melt cycle, and boil mode. Self-diagnostic function.
- Editable menu/recipe names. Visual and audible alarms.
- High temperature safety limit switch
- Includes two (2) twin nickel-plated wire mesh baskets with plastic-coated heat-resistant handles, drain extension pipe and removable basket hanger
- Standard 4-inch caster for easy service and cleaning
- Power cord not included

MODEL	LENGTH	WIDTH	HEIGHT	KW	SHIP WEIGHT (Kilos)
TEFF-14-C	394(15.5)	862.41(34)	1051(41.3)	16.50	74
TEFF-14-2-C	394(15.5)	862.41(34)	1051(41.3)	14.00	74
TEFF-18-C	522(20.5)	862.41(34)	1051(41.3)	16.50	89

GAS FLOOR FRYER

TGFS - 45



FRYER WITH FILTERING MACHINE

TGFS -45-2-C UFM



STANDARD FEATURES (TGFS35/45/45-2/65/TGCF-12: MECHANICAL CONTROLLER)

- Stainless steel tank, front door, side panels, back splash, aluminized back and bottom
- Atmospheric tube fired burner design has larger heat transfer area
- Millivolt Thermostat: 200°F-400°F (93°C-204°C)
- Combination safety pilot and main gas valve
- High temperature safety limit switch
- Drain extension, tube screen, removable basket hanger
- Includes two (2) twin nickel-plated wire mesh baskets with plastic-coated heat-resistant handles
- LPG or natural gas
- Standard 6-inch adjustable legs, optional 4-inch casters

Middleby Philippines Corporation

113 Technology Ave., Technopark, Biñan, Laguna Philippines 4024

Tel. Nos. : (02) 520-8170 to 79 | Fax Nos. : (02) 520-8191 | (049) 541-1361

MODEL	LENGTH	WIDTH	HEIGHT	BTU/Hr.	SHIP WEIGHT (Kilos)
TGCF-12	359(14.13)	649(25.55)	766(30.16)	50,000	59

MODEL	LENGTH	WIDTH	HEIGHT	BTU/Hr.	SHIP WEIGHT (Kilos)
TGFS-35	399(16)	787(30.98)	1202(47)	90,000	76
TGFS-45	399(16)	787(30.98)	1202(47)	120,000	79
TGFS-45-2	399(16)	787(30.98)	1202(47)	120,000	79
TGFS-65	498(19.61)	871(34)	1202(47)	150,000	89

STANDARD FEATURES (TGFS 45/45-2/65 DS: DIGITAL SOLID STATE CONTROLLER):

- Stainless steel tank, front door, side panels, back splash, aluminized back and bottom
- Atmospheric tube fired burner design, has larger heat transfer area
- Solid state thermostat, automatic ignition system
- High temperature safety limit switch
- Drain extension, tube screen, removable basket hanger
- Includes two (2) twin nickel-plated wire mesh baskets with plastic-coated heat-resistant handles
- LPG or natural gas
- Standard 4-inch caster for easy service and cleaning

MODEL	LENGTH	WIDTH	HEIGHT	BTU/Hr.	SHIP WEIGHT (Kilos)
TGFS45-DS	399(15.7)	863(33)	1168(46)	120,000	74
TGFS45-2-DS	399(15.7)	863(33)	1168(46)	120,000	76
TGFS65-DS	498(19)	914(36)	1168(46)	150,000	82

STANDARD FEATURES (COMPUTERIZED CONTROL):

- Stainless steel tank, front door, side panels, back splash, aluminized back and bottom
- Atmospheric tube fired burner design has larger heat transfer area
- Computer controller with 18 product timer, melt cycle, and boil mode
- Automatic ignition system
- High temperature safety limit switch
- Drain extension, tube screen, removable basket hanger
- Includes two (2) twin nickel-plated wire mesh baskets with plastic-coated heat-resistant handles
- LPG or natural gas
- Standard 4-inch caster for easy service and cleaning

MODEL	LENGTH	WIDTH	HEIGHT	BTU/Hr.	SHIP WEIGHT (Kilos)
TGFS-45-C	399(15.7)	863(33)	1168(46)	120,000	79
TGFS-45-2-C	399(15.7)	863(33)	1168(46)	120,000	79
TGFS-65-C	498(19)	914(36)	1168(46)	150,000	82

ELECTRIC COUNTERTOP FRYER

TECF - 46



TECF- 1439



STANDARD FEATURES :

- The exterior case is made of stainless steel, welded and reinforced at front, sides and top. The rear is made of aluminized steel.
- Stainless steel removable fry pots
- Mechanical thermostat, ON/OFF power switch, hi-limit thermostat and pilot light
- Swing-up type self-cleaning heating elements
- Rests on 4" adjustable legs
- Includes chrome-plated fry basket



MODEL	LENGTH	WIDTH	HEIGHT	KW	SHIP WEIGHT (Kilos)
TECF-46	204(8)	456(18)	319(12.55)	1.5	14
TECF-1427	457(18)	483(19)	340(13)	6.0	20
TECF-1439	630(25)	635(25)	433(17)	11.5	37



COUNTERTOP GAS GRIDDLE

TMDG- 24



STANDARD FEATURES :

- Front including top rail is all stainless steel
- Rear and sides are aluminized steel
- Hi-off valve with one standing pilot for each burner
- 3/4" rear gas connection
- Provided with aluminized drip pan
- Rests on 4" adjustable legs

MODEL	LENGTH	WIDTH	HEIGHT	BTU/Hr.	SHIP WEIGHT (Kilos)
TMDG-24	613(24)	650(26)	331(13)	40,000	84
TMDG-36	915(36)	650(26)	331(13)	60,000	125
TMDG-48	1219(48)	650(26)	331(13)	80,000	166

COUNTERTOP GAS GRIDDLE - THERMOSTATIC

TMDG - 24T
 (WITH OPTIONAL DIVIDER)



STANDARD FEATURES :

- Stainless steel front and top
- Rear and sides are aluminized steel
- Thermostatically controlled burners with standing pilot
- Wrapped around with a 3-inch splash guard
- Provided with aluminized drip pan
- 3/4" rear gas connection
- Rests on 2-1/2" adjustable steel legs

MODEL	LENGTH	WIDTH	HEIGHT	BTU/Hr.	SHIP WEIGHT (Kilos)
TMDG-24T	613(24)	650(25.59)	331(13)	54,000	84
TMDG-36T	915(36)	650(25.59)	331(13)	81,000	125
TMDG-48T	1219(48)	650(25.59)	331(13)	108,000	166

HIGH EFFICIENCY GRIDDLE

STANDARD FEATURES (HEG) :

- Stainless steel front, sides with aluminized rear bottom
- Infrared ceramic atmospheric burner - no air blowers
- Solid state temperature controller for each heating zone
- Full automatic pilot ignition with flame loss detection
- 1 inch-thick polish rolled steel plate
- Side grease can at left and right
- 3/4" gas connection
- Rests on 6" caster wheels

STANDARD FEATURES (MEG):

- Stainless steel front and sides with aluminized rear and bottom
- Heavy-duty heating elements covering each heating zones
- Solid state temperature controller for each heating zone
- Mercury-free heat relay
- 1 inch-thick polished rolled plate
- Side grease can at left and right
- Rests on 6" caster wheels
- Includes egg cooker hanger at rear splasher

THEG- 24



MODEL	LENGTH	WIDTH	HEIGHT	BTU/Hr.	SHIP WEIGHT (Kilos)
THEG-18	526(20.17)	944(37)	850(33)	60,000	180
THEG-24	719(28.31)	944(37)	850(33)	60,000	193
THEG-36	1010(39.76)	944(37)	850(33)	90,000	270



MODEL	LENGTH	WIDTH	HEIGHT	KW	SHIP WEIGHT (Kilos)
TMEG-18	526(20.17)	944(37)	850(33)	10.40	134
TMEG-24	719(28.31)	944(37)	850(33)	10.40	161
TMEG-36	1010(39.76)	944(37)	850(33)	15.10	204

ELECTRIC COUNTERTOP GRIDDLE

TECG - 7224



STANDARD FEATURES:

- Stainless steel front, back and sides, aluminized rear
- Mechanical thermostat and heating indicator light with stainless steel guard on control panel
- 1/2" thick griddle plate
- Wrapped around with 3" splash guard
- Wirings are to be connected at the terminal block
- Full-width stainless steel grease trough mounted at the front area
- Rests on 4" adjustable legs

MODEL	LENGTH	WIDTH	HEIGHT	KW	SHIP WEIGHT (Kilos)
TECG-7324	610(24)	714(28)	424(16)	10.40	75.0
TECG-7336	914(36)	714(28)	424(16)	16.40	112.5
TECG-7348	1219(48)	714(28)	424(16)	21.50	150.0
TECG-7224	610(24)	635(25)	424(16)	8.00	75.0
TECG-7236	914(36)	635(25)	424(16)	21.00	112.5

SANDWICH GRILL

TA710



STANDARD FEATURES :

- Stainless steel body construction
- Cast aluminum grill plate top and bottom
- Mechanical thermostat and dual function ON/OFF switch
- Simultaneous top and bottom grilling and/or bottom grilling
- Top grill can be adjusted from paper thin to thick sandwiches
- Provided with power cord
- Available in plain (S) or grooved (P) plates

MODEL	LENGTH	WIDTH	HEIGHT	KW	SHIP WEIGHT (Kilos)
TA710S	368(14)	338(13)	298(12)	1.65	15



HOT FOOD SERVER

T3B80A



STANDARD FEATURES:

- Frame is welded and reinforced steel sheet
- Aluminized body and stainless steel drawer front and flange
- Glass thermometers , mechanical thermostat, pilot light with chrome-plated guard
- Positive action spring-loaded drawer latch
- Drawers glide on third member suspension system rails
- Individual drawer moist/crisp control
- Mountable on wooden fixtures or stand alone with 4" adjustable legs
- Single (T3B80A) and dual (T3B84A) thermostat control
- Removable stainless steel pans
- Provided with 48" flexible conduit for electrical connection

MODEL	LENGTH	WIDTH	HEIGHT	KW	SHIP WEIGHT (Kilos)
T3B80A	741 (29)	276 (10)	552 (21.75)	1.00	35
T3B84A	741 (29)	276 (10)	542 (21.34)	0.90	35

DISPLAY WARMER

DW1322



STANDARD FEATURES:

- Stainless steel construction, mirror finish body
- Rocker switch and pilot light and infinite switch for temperature control
- Frosted acrylic signage holder with light
- With three (3) levels of stainless steel removable wire mesh
- Sliding tempered clear glass door
- Rests on leveling feet

MODEL	LENGTH	WIDTH	HEIGHT	KW	SHIP WEIGHT (Kilos)
DW 1322	563(22)	333(13)	544(21.43)	0.8	38

HUMIDIFIED HOLDING CABINET

STANDARD FEATURES :

- Stainless steel front, back, top, sides and doors
- Digital solid state cabinet temperature controller
- Solid state analog humidity controller
- Power switch and heating indicator light
- Full perimeter door seals, magnetic door latches, cam lift off doors, removable side racks
- Rests on caster wheels, two (2) with brakes
- Manual water fill and drain
- Capacity: TMHHC-14BP- 14 full-size bun pan
TMHHC-6BP- 6 full-size bun pan
- Optional : digital solid state humidity controller

TMHHC-14BP



MODEL	LENGTH	WIDTH	HEIGHT	KW	SHIP WEIGHT (Kilos)
TMHHC- 6BP	699 (27)	833 (33)	693 (27)	2.27	79
TMHHC- 14BP	699 (27)	833 (33)	1870 (74)	2.44	143

DRAWER HEATED CABINET

STANDARD FEATURES :

- Stainless steel front, top, sides and back
- Solid state controller, ON/OFF switch and pilot light
- Snug-fitting drawers on low-friction bearing
- Single-piece welded drawer and liner
- Rests on leveling feet

DHC 305



MODEL	LENGTH	WIDTH	HEIGHT	KW	SHIP WEIGHT (Kilos)
DHC - 305	461 (18)	613 (24)	628 (25)	0.8	48

HUMIDIFIED HOLDING CABINET - COUNTER TYPE

MHHC 0612



STANDARD FEATURES:

- Stainless steel water tank and interior cabinet
- Stainless steel exterior, aluminized steel bottom cover
- Digital solid state cabinet and humidity temperature controller
- Programmable timer for each product tray
- Separate cavity and water heaters
- Low water indicator and alarm
- Rests on high 4" adjustable steel legs
- Supplied with power cord



MODEL	LENGTH	WIDTH	HEIGHT	KW	SHIP WEIGHT (Kilos)
MHHC- 0612	535 (21)	636 (25)	772 (30)	3.44	69
MHHC- 1012	535 (21)	636 (25)	910 (36)	3.44	87



KIOSK CONVECTION OVEN

TKCO 25



STANDARD FEATURES:

- Stainless steel front and sides with aluminized steel bottom and back
- Digital solid state control, convection blower, power ON/OFF, pilot light and hi-limit switch
- Large chrome-plated steel door handle for a confident grip
- Rests on 4" adjustable steel legs
- Equipped with three (3) stainless steel removable oven wire racks

MODEL	LENGTH	WIDTH	HEIGHT	KW	SHIP WEIGHT (Kilos)
TKCO 25	483 (19)	685 (27)	612 (25)	2.70	62

ELECTRIC COMPACT DECK OVEN

TECDO 1415



STANDARD FEATURES:

- Stainless steel front and sides with aluminized steel bottom and back
- Digital solid state temperature controller, heat and power indicator light
- Three (3) tubular type heaters
- Large steel door handle for a confident grip with tempered glass window
- Rests on 4" adjustable steel legs
- Two (2) decks removable granite stone

MODEL	LENGTH	WIDTH	HEIGHT	KW	SHIP WEIGHT (Kilos)
TECDO 1415	685 (27)	711 (28)	533(21)	3.75	112

RESTAURANT RANGE WITH OVEN

STANDARD FEATURES:

- Top burner rated at 20,000 BTU per hour natural or propane gas
- Conventional type bottom oven is rated at 31,000 BTU per hour
- Safety shut-off valve for flame loss, thermostatically-controlled oven burner
- Stainless steel front, sides and shelf and aluminized inner body
- The range top is equipped with cast iron burners
- Heavy duty HI/OFF gas valve
- Removable cast iron grate w/ drip tray under burners and 3/4" gas connection
- Rests on 6" high adjustable legs

T336D



MODEL	LENGTH	WIDTH	HEIGHT	BTU/Hr.	SHIP WEIGHT (Kilos)
T324D	618 (24)	855 (34)	1502 (59)	80,000	181
T336D	923 (36)	855 (34)	1502 (59)	120,000	201

COUNTERTOP RANGE

STANDARD FEATURES:

- Front including top rail is all stainless steel. Rear and sides are aluminized steel.
- Hi-off valve with one standing pilot for each burner
- Full-width crumb tray
- 3/4" rear gas connection
- Rests on 4" adjustable steel legs

TMD024



MODEL	LENGTH	WIDTH	HEIGHT	BTU/Hr.	SHIP WEIGHT (Kilos)
TMDO-12	315.5(12)	692(27)	293(12)	40,000	36
TMDO-24	622(24)	692(27)	293(12)	80,000	70
TMDO-36	927(36)	692(27)	293(12)	120,000	99

ELECTRIC COUNTERTOP HOT PLATE

TECHP 1132



STANDARD FEATURES :

- Top case and mounting flange are fabricated from stainless steel. Body is encased in aluminized steel.
- Solid round hotplate with element embedded in ceramic and permanently bonded to the plate
- Infinite switch temperature controller and heating indicator light with stainless steel guard on control panel
- Wirings are to be connected at the terminal block



MODEL	LENGTH	WIDTH	HEIGHT	KW	SHIP WEIGHT (Kilos)
TECHP-1132	381(15)	635(25)	351(14)	5.20	16

STEP-UP OPEN TOP RANGE

TMSO 624

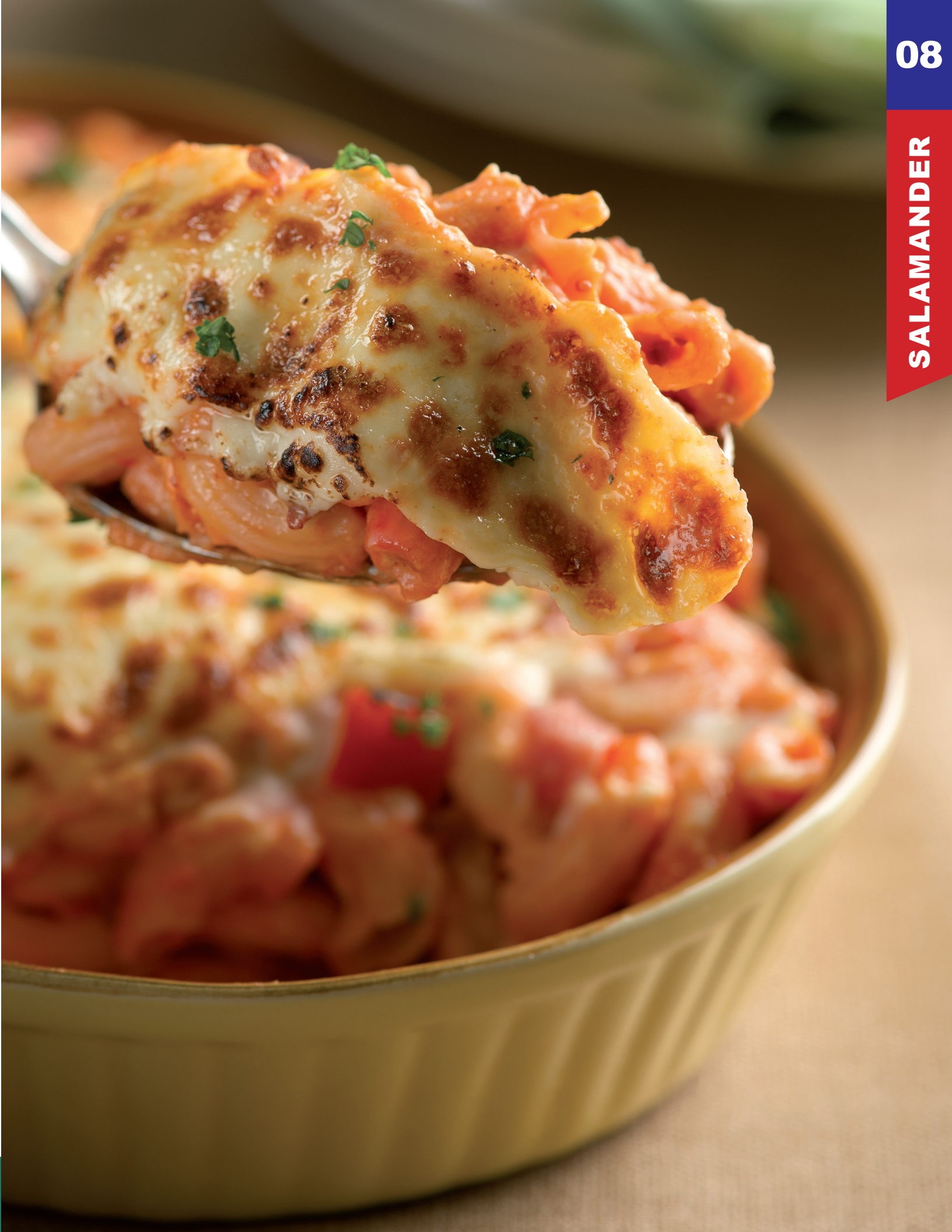


STANDARD FEATURES :

- Front, back and sides including top rail are stainless steel
- Hi-off valve with one standing pilot for each burner
- Elevated rear with cast iron top grates and open burners
- Aluminized drip tray
- 3/4" rear gas connection
- Rests on 4" adjustable steel legs



MODEL	LENGTH	WIDTH	HEIGHT	BTU/Hr.	SHIP WEIGHT (Kilos)
TMSO-208	203(8)	756(29.76)	367(14.45)	40,000	29
TMSO-416	406(16)	756(29.76)	367(14.45)	80,000	44
TMSO-624	610(24)	756(29.76)	367(14.45)	120,000	82



SALAMANDER GRILL

TSIG 3230



STANDARD FEATURES :

- Stainless steel exterior and aluminized steel interior walls
- Ceramic tile, infrared burner
- HI-OFF heavy duty gas valve with one standing pilot
- Double wall reinforced side and back
- With four (4) adjustable grid positions for optimum broiler applications
- Removable broiler rack and grease drip pan
- 3/4" rear gas connection
- Optional Mounting: Can be mounted to a flue riser, wall mount or countertop unit

MODEL	LENGTH	WIDTH	HEIGHT	BTU/Hr.	SHIP WEIGHT (Kilos)
TSIG-3230	814 (32)	514 (20)	480 (19)	30,000	71

CHEESEMELTER

TCM 521



STANDARD FEATURES :

- Stainless steel construction on front, back and sides
- 60-minute mechanical timer, pilot light and ON/OFF power switch
- Stainless steel removable and adjustable shelves
- Provided with power cord
- Rests on 2-1/2" adjustable legs

MODEL	LENGTH	WIDTH	HEIGHT	KW	SHIP WEIGHT (Kilos)
TCM-513	472(18)	309(12)	328(13)	1.2	25
TCM-521	660(26)	309(12)	328(13)	1.6	35



GAS STEAMER

TEZ5



STANDARD FEATURES :

- Stainless steel front, sides and top with aluminized back and flue extension
- Atmospheric tube fired burner for efficient operation
- Automatic water-fill and lo water level indicator
- Combination gas valve, solid state controller with knob guard, hi-limit thermostat, glass thermometer and pilot light
- Heavy duty door latches with ajar function
- Accommodates standard full-size food pans
- Rests on 4" adjustable steel legs
- Optional : Automatic ignition

MODEL	LENGTH	WIDTH	HEIGHT	BTU/Hr.	SHIP WEIGHT (Kilos)
TSR2	406 (16)	901 (35.5)	1840 (72)	90,000	208
TEZ5	456 (18)	901 (35.5)	1840 (72)	90,000	221

COUNTERTOP STEAMER

R2



STANDARD FEATURES :

- Stainless steel front, back, sides, top and bottom
- Mechanical timer, ON/OFF switch, drain valve, pilot light and automatic water fill
- Heavy duty door latches, 1/4-inch water line connection and 1-inch drain connection
- Rests on a 12-inch free standing steamer stand or on 4-inch steel legs for a countertop unit

MODEL	LENGTH	WIDTH	HEIGHT	KW	SHIP WEIGHT (Kilos)
R2	404 (16)	618 (24)	537 (21)	9.00	68



CONVEYOR OVEN

TC-17



TC-13



STANDARD FEATURES:

- Stainless steel housing on front and sides, with aluminized back cover
- Conveyor speed control, control knob on ON/OFF standby position and heat control
- One or two-sided toasting is allowed
- Rests on 4" adjustable steel legs
- Provided with power cord
- Equipped with load-up tray and crumb tray

STANDARD FEATURES:

- Stainless steel housing on front and sides, with aluminized back corner
- Overheat pilot, conveyor speed control and ON/OFF standby positions regulate top and bottom heat
- One or two-sided toasting is allowed
- Provided with power cord
- Equipped with load-up tray and crumb tray

MODEL	LENGTH	WIDTH	HEIGHT	KW	SHIP WEIGHT (Kilos)
TC-17	370(14)	439(17)	393(15)	2.66	19
TC-13	361(14.21)	504(19.48)	340(13.39)	1.64	20

BUN TOASTER

STANDARD FEATURES:

TBT 1712



- Stainless steel and aluminum construction
- Controlled by digital solid state temperature control, pilot light, audible alarm, magnetic switch and solid state timer
- Durable heating plate provides uniform heat
- Adjustable timer from 1 to 500 seconds and adjustable bun thickness control
- Ideal for burger buns. Toasts up to 12 whole buns at one time.
- Includes bun spatula
- Provided with power cord

MODEL	LENGTH	WIDTH	HEIGHT	KW	SHIP WEIGHT (Kilos)
TBT-1712	405(16)	660(26)	355(14)	2.0	65



INDEX

BROILER, 3

Ceramic Tandoor, 5
Countertop Electric Charbroiler, 5
Countertop Gas Charbroiler – Lava Rock, 4
Countertop Gas Charbroiler – Radiant, 4
Shish Kebab, 6

FILTERING MACHINE, 7

Oil Filtering Machine, 8

FOOD WARMER, 9

Countertop Electric Food Warmer, 10

FRYER, 11

Electric Countertop Fryer, 16
Electric Floor Fryer, 12
Fryer with Filtering Machine, 14
Gas Floor Fryer, 14

GRIDDLE, 17

Countertop Gas Griddle, 18
Countertop Gas Griddle - Thermostatic, 18
Electric Countertop Griddle, 20
High Efficiency Griddle, 19
Sandwich Grill, 20

HOLDING CABINET, 21

Display Warmer, 22
Drawer Heated Cabinet, 23
Hot Food Server, 22
Humidified Holding Cabinet, 23
Humidified Holding Cabinet -
Counter Type, 24

OVEN & RANGE, 25

Countertop Gas Open Top, 27
Electric Compact Deck Oven, 26
Electric Countertop Hotplate, 28
Kiosk Convection Oven, 26
Restaurant Range with Oven, 27
Step-up Open Top Range, 28

SALAMANDER, 29

Cheesemelter, 30
Salamander Grill, 30

STEAMER, 31

Countertop Steamer, 32
Gas Steamer, 32

TOASTER, 33

Bun Toaster, 34
Conveyor Oven, 34



